



# **2011 ANNUAL REPORT**

*Delaware County a place where families and children thrive and are empowered to maximize their potential.*

## ***Family and Children First Council***

*7991 Columbus Pike*

*Lewis Center, OH 43035*

*Website: [fcfdelawarecounty.org](http://fcfdelawarecounty.org)*

*Prepared by:  
Kathy McWatters, Council Coordinator  
Phone: 614.390.1500  
E-mail: [fcfcmcwatters@insight.rr.com](mailto:fcfcmcwatters@insight.rr.com)*

## ***Table of Contents***

***Section 1..... Delaware County Family and Children First Council  
Organization Chart  
Membership Roster  
SFY Operating Budget***

***Section 2..... Delaware County Family and Children First Council  
Shared Community Plan  
Projects and Initiatives  
Community and School Collaborations***

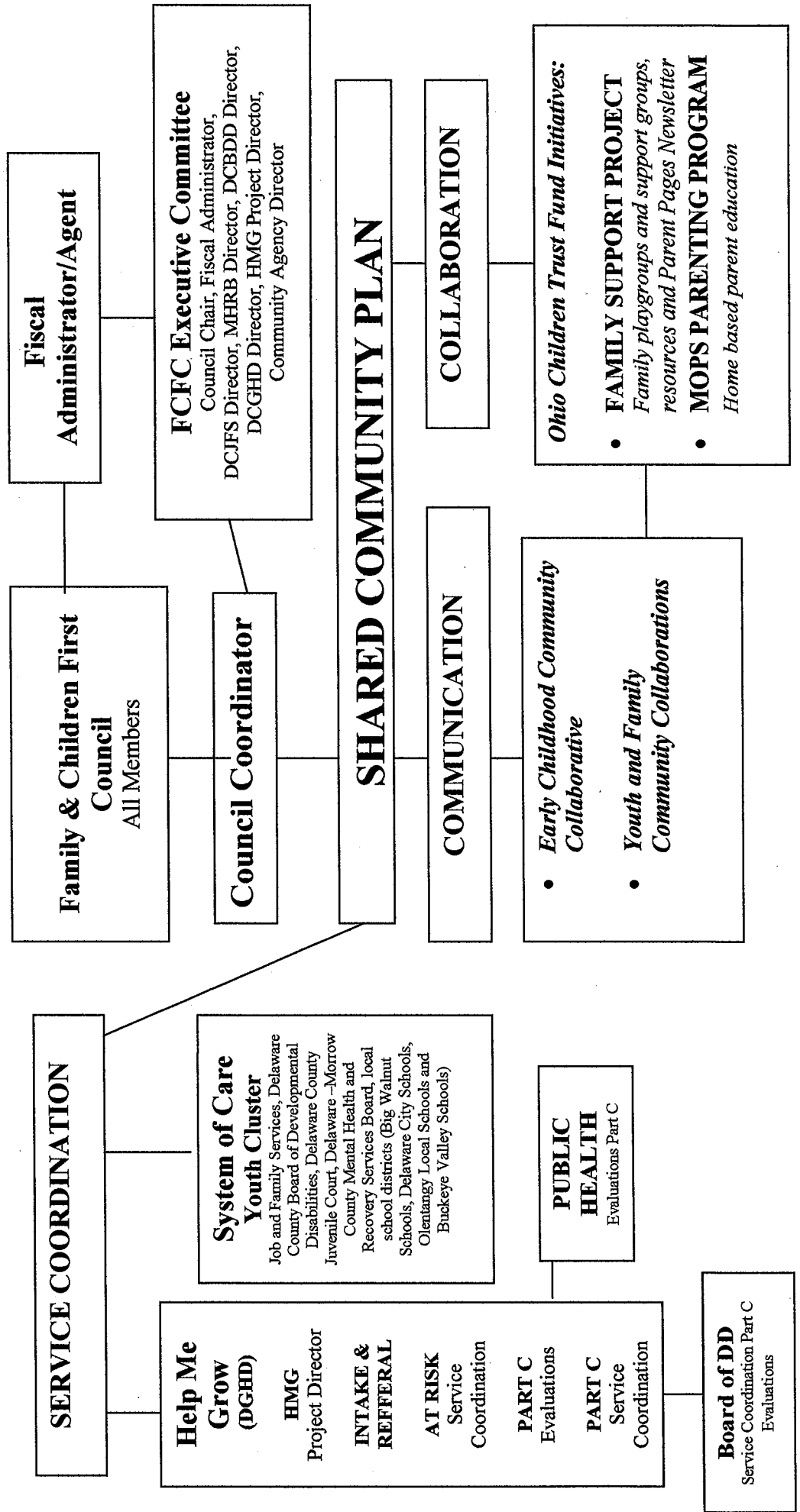
***Section 3.....Delaware County Demographics  
Ohio Department of Development  
Office of Policy, Research and Strategic Planning***

## **Section 1**

# **Delaware County Family and Children First Council**

**Organization Chart  
Membership Roster  
SFY Operating Budget**

# Delaware County Family & Children First Council 2011-2012 Table of Organization



# Delaware County Family and Children First Member Directory

**Member**

Code	Name & Agency	Address	Phone/Fax/e-mail
M	Bethany Mirka Family Representative	3000 Russell Road Ostrander, OH 43061	tbmirka@hotmail.com 740-666-2222
M	Sue Bastaja Family Representative	612 Foxdale Place Powell OH 43065	sbastaja@columbus.rr.com 740-881-9489
M	Suzanne Rumbalski Family Representative	440 Taylor Ave. Delaware, OH 43015	srumbalski@columbus.rr.com 740-362-3614
M	Nancy March Family Representative	9062 Longstone Dr Lewis Center, OH 43035	marchgemmlm@sbcglobal.net (614)264-1232
M	Ken O'Brien Delaware County Board of Commissioners	101 N. Sandusky Street Delaware, OH 43015	740.833.2100 740.833.2099 E-mail: kobrien@co.delaware.oh.us
M	Steve Hedge, Executive Director Del-Morrow Mental Health & Recovery Svcs Bd.	40 N. Sandusky Street, Suite 301 Delaware, OH 43015	740.368.1740 Fax: 368.1744 E-mail: shedge@ohiopps.org
D	Amy Hill Del-Morrow Mental Health & Recovery Svcs Bd.	40 N. Sandusky Street, Suite 301 Delaware, OH 43015	740.368.1740 Fax: 368.1744 ahill@ohiopps.org
M	Fran Veverka, Health Commissioner Delaware General Health District	1 W. Winter Street, PO Box 570 Delaware, OH 43015	740.203.2001 fran@delawarehealth.org
D	Joan Bowe, Director of Personal Health Delaware General Health District	1 W. Winter Street, PO Box 570 Delaware, OH 43015	740-203-2032 joan@delawarehealth.org
M	Angela Thomas, Director Delaware Co. Job and Family Services	140 N. Sandusky Street, 2 <sup>nd</sup> Fl Delaware, OH 43015	740.833.2307, Fax 740.833.2299 THOMAA01@odjfs.state.oh.us
D	Sue Ware, Administrator Delaware Co. JFS -- Children Services	140 N. Sandusky Street, 2 <sup>nd</sup> Fl Delaware, OH 43015	740.833.2367, 740.833.2299 wares01@odjfs.state.oh.us
M	Bob Morgan, Superintendent Board of Developmental Disabilities	7991 Columbus Pike, Lewis Center OH 43035	Office: 740.201.5800; Fax: 740.201.580 Cell: 740.272.1658 rmorgan@dcbdd.org
	Linda Hartford-Davis Board of Developmental Disabilities	7991 Columbus Pike, Lewis Center OH 43035	Office: 740.368.5803 lhndavis@dcbdd.org
	Beth Brown Board of Developmental Disabilities	7991 Columbus Pike, Lewis Center OH 43035	Office: 740.368.5804 beth.brown@dcbdd.org
	Sherry Nagy Board of Developmental Disabilities	7991 Columbus Pike, Lewis Center OH 43035	614-565-7233 sherry.nagy@dcbdd.org
	Melanie Lehman Board of Developmental Disabilities	7991 Columbus Pike, Lewis Center OH 43035	Office: 740.201.5826 Melanie.lehman@dcbdd.org
	Kristy Schaber Board of Developmental Disabilities	7991 Columbus Pike, Lewis Center OH 43035	Office: 740.201.5804 Kristy.schaber@dcbdd.org
	Paula Dinovo Board of Developmental Disabilities	7991 Columbus Pike, Lewis Center OH 43035	paula.dinovo@dcbdd.org

	Ken Spicer, Juvenile & Probate Court Judge Delaware County	140 N. Sandusky Street Delaware, OH 43015	740.833.2596 kspicer@co.delaware.oh.us
	Patty Cram Delaware County Juvenile Court	140 N. Sandusky Street Delaware, OH 43015	pcram@co.delaware.oh.us 740-833-2678
	Katie Murray Delaware County Juvenile Court	140 N. Sandusky Street Delaware, OH 43015	kmurray@co.delaware.oh.us 740-833-2671
M	Wade Lucas, Superintendent Olentangy Local School District	814 Shanahan Road Lewis Center, OH	(740) 657-4011 superintendent@olentangy.k12.oh.us
D	Michele Armstrong Olentangy Local School District	814 Shanahan Road Lewis Center, OH	(740) 816-2261 Michele_armstrong@olentangy.k12.oh.us
M	Bart Anderson, Superintendent Educational Services Center of Central Ohio	2080 Citygate Drive Columbus, OH 43219	Bart.Anderson@escco.org
D	Marie Ward Educational Services Center of Central Ohio	2080 Citygate Drive Columbus, OH 43219	Marie.Ward@escco.org 614-753-4650
	Dawn Brewer Educational Services Center of Central Ohio	2080 Citygate Drive Columbus, OH 43219	740.548.7880 Fax: 740-657-8405 Dawn.Brewer@escco.org
	Renee Brinson Educational Services Center of Central Ohio	4981 County Home Rd. Delaware, OH 43015	740-369-1175 Fax: 740.369.1641 Renee.Brinson@escco.org
	Paul Craft, Superintendent Delaware City Schools	248 N. Washington Street Delaware, OH 43015	740.833.1100; 740.833.1149 ashworma@dcs.k12.oh.us
	Virginia Cardwell Delaware City Schools	248 N. Washington Street Delaware, OH 43015	740.833.1128; 740.833.1149 cardweje@dcs.k12.oh.us
	Karen Jackson Delaware City Schools, SACC	621 Pennsylvania Ave. Delaware, OH 43015	740-833-1851 jacksoka@dcs.k12.oh.us
	Karen Hall Big Walnut Schools	70 N Walnut St Galena, OH 43021	740-965-3010 karenhall@bigwalnut.k12.oh.us
	Anne Wisniewski Delaware Area Career Center	1610 State Route 521 Delaware, OH 43015	740-203-2211 wisniewskia@delawareareacc.org
M	Rita Mendel Delaware Police Department	70 W. Union Street Delaware, OH 43015	(740) 203-1132 rmendel@delawareohio.net
M	Lisa Owens Ohio Department of Youth Services	1040 Alum Creek Drive Columbus, OH 43209	614-466-4676 614.752.7492 lisa.owens@dys.ohio.gov
M	Marianne Chillinsky LEADS Headstart	159 Wilson Street Newark, OH 43055	740.349.8606; 740.345.2380 mchillinsky@leadscsaa.com
D	Mary Rose Lewis LEADS Headstart	159 Wilson Street Newark, OH 43055	740.349.8606; 740.345.2380 mrlewis@leadscsaa.org
	Angela Ewald LEADS Headstart	159 Wilson Street Newark, OH 43055	740.349.8606; 740.345.2380 aewald@leadscsaa.org
	Sue Hanson, Executive Director Helpline of Delaware County	11 N. Franklin Street Delaware, OH 43015	740.363.1835 740.369.0358 shanson@helplineofdelmor.org
	Nancy Radcliffe Helpline of Delaware County	11 N. Franklin Street Delaware, OH 43015	740.369.1835 nradcliffe@helplineofdelmor.org

	, PEACE Coordinator Helpline of Delaware County	11 N. Franklin Street Delaware, OH 43015	delcopsacecollab@gmail.com 740-368-1740 ext. 117
	Brande Urban, Empowerment Coordinator PEACE Stand Up Leadership Team Helpline of Delaware County	11 N. Franklin Street Delaware, OH 43015	delcovouthempower@gmail.com 740-363.1835 x 108
	Mark Travis, Director Central Ohio Mental Health Center	824 Bowtown Road, Delaware, OH 43015	740.368.7688 mtravis@comhc.org
	Colleen Harvey Central Ohio Mental Health	824 Bowtown Road, Delaware, Ohio 43015	colleen.harvey@comhc.org 740-369-7688
	Kerri Robe Big Brothers Big Sisters	39 W. Winter Street Delaware, OH 43015	740.369.2447; 740.369.5437 krobe@bbbcentralohio.org
	Rochelle Twining, Director Community Action Organization of DMU	648 Clymer Road Marysville, OH 43040	(937) 642-4986 rtwining@caodmu.org
	Diana Coffman, Manager Community Action Organization of DMU	149 N. Sandusky Delaware, OH 43015	740-369-3184 delawaremgr@caodmu.org
	Diana Rice, VITA Program Manager Community Action Organization of DMU	149 N. Sandusky Delaware, OH 43015	740-369-3184 vitamgr@caodmu.org
M	Peg Schalmo, Coordinator Action for Children	39 W. Winter Street Delaware, OH 43015	740.369.0649 pschalmo@rrohio.com
D	Molly Watkins Action for Children	39 W. Winter Street Delaware, OH 43015	740.369.0649 mollywatkins@actionforchildren.org
	Robin Moore Woodward Family Resource Center Action for Children	200 South Washington Street Delaware, Ohio 43015	740-833-1619 robinmoore@actionforchildren.org
	Brandon Feller, Executive Director United Way of Delaware County	40 N Sandusky Street, Suite 203 Delaware, OH 43015	740.369.9618; 740.369.9080 bfeller@uway.delaware.org
	Joyce Rhodes, Director Child Support Enforcement Agency	140 N. Sandusky Street, 3 <sup>rd</sup> Fl Delaware, OH 43015	740.833.2720; 740.833.2719 rhodej@odjfs.state.oh.us
	Stephanie Adrian Recovery & Prevention Resources	118 Stover Drive Delaware, OH 43015	(740) 369-6811 Stephanie.adrian@rprdm.org
	Julie Krupp Recovery & Prevention Resources	118 Stover Drive Delaware, OH 43015	(740) 369-6811 Julie.krupp@rprdm.org
	Drug Free Delaware Coalition	118 Stover Drive Delaware, OH 43015	
	Bruce Denton Big Walnut Friends Who Share	1281 S Galena Road Galena, OH 43021	bdenton@columbus.rr.com
	Tim Adams, Director Liberty Community Center	207 London Rd. Delaware, OH 43015	(740) 369-3876 tadams@delawarelcc.org
	OWU Community Service Program	Ohio Wesleyan University Delaware, OH 43015	740-368-3084
	Rebecca Scott Girl Scouts of Ohio's Heartland	1700 Watermark Drive Columbus, OH 43215-1097	rscott@gsosohioheartland.org

Lisa Pangborn Child Care Unlimited, Inc.	P.O. Box 186 Galena, OH 43021	dlpang@peoplepc.org
Catherine Wood ATM Education	130 Burrer Drive PO Box 323 Sunbury, OH 43074	(740)965-2046 Fax 740-965-2169 catherinew@fastmail.fm
Sara Sears ATM Education	130 Burrer Drive PO Box 323 Sunbury, OH 43074	(740)965-2046 Fax 740-965-2169 saracar181@hotmail.com
Paula Roller Turning Point	P.O. Box 875 Marion, OH 43302	proller@turningpoint6.org
Beth Fetzter-Rice Salvation Army		Bfetzter-Rice@USE.salvationarmy.org
Tiana Brown Salvation Army	340 Lake Street Delaware, OH 43015	740-363-9487 x 233 Tianna.brown@USE.salvationarmy.org
Jamie Haller Directions for Youth	297 S. Sandusky Delaware, Ohio 43015	740-362-3952 ihaller@dfvf.org
Kristen Young Directions for Youth	297 S. Sandusky Delaware, Ohio 43015	740-362-3952 kyoung@dfvf.org
Melanie Sauls The Village Network	575-B Sunbury Road Delaware, Oh 43015	
Don Chenoweth, Executive Director Andrews House	39 West Winter Street Delaware, OH 43015	740-369-4520 dchenoweth@andrewshouse.org
Chauncey Montgomery, Director Community Library	44 Burrer Drive Sunbury, OH 43074	montgoc1@oplin.org
Georgann Whitney Community Library	44 Burrer Drive Sunbury, OH 43074	whitnege@oplin.org
The Core Center	130 Burrer Drive Sunbury, OH 43074	@thecorecenter.org
Jennifer Sami Family Promise of Delaware County	35 N. Washington Delaware, OH 43015	phone: (740) 362-7817 fax: (740) 362-7670 jennifersami@familypromise-delawareohio.org
Beth Hanner Delaware County Special Needs Emergency Registry Advisory Committee	10 Court Street, Delaware, OH 43015	740-833-2180 Office/740-602-3253 Cell E-mail: bhanner@columbus.rr.com Website: <a href="http://www.delcospecialneeds.com/">http://www.delcospecialneeds.com/</a>
Bill Steinhoff Council for Older Adults	1671 N. Galena Road Sunbury, OH 43074	740.602.3370 wsteinhoff838@gmail.com
Harry Pape Habitat for Humanity	305 Curtis Street Delaware, OH 43015	740-363-9950 x 224 harry@habitatdelawareco.org
Tina Younoszai Literacy Coalition of Delaware County		tinay@delaware-reads.org

Connie Pottle Delaware County District Library	84 E. Winter Street Delaware, OH 43015	740-362-3681 FAX: 740-369-0196 cpottle@delawarelibrary.org
Kimberly Blair Mid-Ohio Psychological Services, Inc.	24 S. Sandusky Street Delaware, OH 43015	740-417-9265 FAX: 740-417-9268 kimblair@mopsOhio.com
Peggy Kroon Van Diest Project Director, Help Me Grow Delaware General Health District	3 W. Winter Street, PO Box 570 Delaware, OH 43015	740.203.2041; 740.203.2035 pkroonvandiest@delawarehealth.org
Kathy McWatters Council Coordinator	7991 Columbus Pike Lewis Center, OH 43035	740-548-7880 ext 3464 kathy.mcwatters@escoco.org

**MANDATED MEMBERS INCLUDE:**

- At least three (3) individuals whose families are or have received services from an agency represented on the Council or another County's Council. Where possible, the number of members representing families shall be equal to twenty percent of the council's membership.
- The Executive Director of the Delaware/Morrow Mental Health & Recovery Services Board, or the Executive Director's designee.
- The Health Commissioner of the Delaware General Health District, or the Commissioner's Designee.
- The Director of the Delaware County Department of Job and Family Services.
- The Director of the Delaware County Children Services.
- The Superintendent of the Delaware County Board of Developmental Disabilities.
- The Superintendent of the largest school district in Delaware County, as determined by student population living in the county or the Superintendent's designee.
- A designee representing all other school districts within Delaware County as designated by the superintendents of those districts.
- A representative of the City of Delaware.
- The chair of the Board of Delaware County Commissioners, or an individual designated by the board.
- A representative of the regional office of the Ohio Department of Youth Services.
- A representative of Delaware County's Head Start Agency or Agencies as defined in Section 3301.31 of the Ohio Revised Code.
- A representative of the Early Childhood Coordinating Committee (County Collaborative Group), established pursuant to the "Education of the Handicapped Act Amendments of 1986".
- A representative from Youth Committee (Collaboration) committee.
- A representative of a local non-profit entity that funds, advocates, or provides services to children and families.

Family Children First Council		TOTAL	TOTAL
SFY 2011 Budget		Proposed	Actual as of 6/30/2011
SFY 2010 Carry Over			
ADMIN (Estimate)	9,995.41		
GRF (Estimate)	49,589.79		
<b>Subtotal Carry Over</b>	<b>59,585.20</b>		
<b>SFY 2011 REVENUE</b>			
Family & Children First Admin. Grant	17,069.00		
HD/MH/MRDD/JFS/JC (\$2,500.00 each)	12,500.00		
HMG State \$ for DGH services	506,721.00		
Children & Family Trust ADMIN.	1,959.00		
OCTF contracts	37,224.00		
System of Care Funds	26,861.00		
<b>Subtotal SFY2011 Income</b>	<b>602,334.00</b>		
<b>TOTAL INCOME &amp; CARRY OVER</b>	<b>648,334.00</b>		<b>604,323.26</b>
<b>SFY 2011 EXPENSES</b>			
Contracted Professional Services	43,284.00		45,985.56
DGHD HMG Contract (Grant)	532,721.00		438,780.22
DCBDD Contract (Evaluation)	4,000.00		1,210.00
OCTF contracts (\$37,224.00)	37,224.00		27,171.00
System of Care Purchased Services	26,861.00		19,044.99
<b>Subtotal Contracted Services</b>	<b>644,090.00</b>		<b>532,191.77</b>
Parent Stipends	900.00		
Audit Expenses	1,000.00		
Misc/Other	1,500.00		47.00
<b>SUBTOTAL OTHER EXPENSES</b>	<b>3,400.00</b>		<b>47.00</b>
<b>SFY 11 TOTAL EXPENSES</b>	<b>647,490.00</b>		<b>532,238.77</b>
<b>CARRY OVER SFY 2012</b>			
<b>Total State Allocation for HMG (SFY 11)</b>	<b>506,721.00</b>		
<b>Total State Allocation for OCTF (SFY 11)</b>	<b>39,183.00</b>		
<b>SYSTEM OF CARE (SFY 11)</b>	<b>26,861.00</b>		

Family Children First Council		TOTAL	TOTAL
SFY 2012 Budget Proposal		Proposed	Proposed
SFY 2011 Carry Over			
ADMIN (estimated)	10,000.00		
GRF (estimated)	43,000.00		
<b>Subtotal Carry Over</b>	<b>53,000.00</b>		
<b>SFY 2012 REVENUE</b>			
Family & Children First Admin. Grant	15,750.00		
HD/MH/MRDD/JFS (\$2,500 each)	10,000.00		
HMG State \$ for DGH services PART C	465,797.00		
HMG State \$ for DGH services HOME VISITING	60,042.00		
Children & Family Trust ADMIN.	1,959.00		
OCTF contracts	37,224.00		
System of Care Funds	26,861.00		
<b>Subtotal SFY2012 Income</b>	<b>617,633.00</b>		
<b>TOTAL INCOME &amp; CARRY OVER</b>	<b>670,633.00</b>		
<b>SFY 2012 EXPENSES</b>			
DCBDD Contract(Contracted Professional Services)	42,365.00		
DGHD HMG Contract (Grant) PART C	465,797.00		
DGHD HMG Contract (Grant) HOME VISITING	60,042.00		
DCBDD Contract EVALUATION	6,225.00		
OCTF contracts (\$37,224.00)	37,224.00		
System of Care Purchased Services	26,861.00		
<b>Subtotal Contracted Services</b>	<b>638,514.00</b>		
Parent Stipends	500.00		
Audit Expenses	2,000.00		
Misc/Other (computer, printer, website fee)	1,000.00		
<b>SUBTOTAL OTHER EXPENSES</b>	<b>3,500.00</b>		
<b>TOTAL EXPENSES</b>	<b>642,014.00</b>		
<b>CARRY OVER SFY 2013</b>	<b>28,619.00</b>		
<b>Total State Allocation for HMG PART C</b>	<b>465,797.00</b>		
<b>Total State Allocation for HMG HOME VISITING</b>	<b>60,042.00</b>		
<b>Total State Allocation for OCTF</b>	<b>39,183.00</b>		
<b>Total State Allocation SYSTEM OF CARE</b>	<b>26,861.00</b>		

**Section 2**  
**Delaware County Family and**  
**Children First Council**

**Shared Community Plan**  
**Projects and Initiatives**  
**Community & School Collaborations**

# Delaware County Family and Children First Council Shared Plan for SFY 12

**FCFC Initiatives:**  
 Service Coordination: Early Identification/Intervention  
 Service Coordination: System of Care/Multi Need  
 Collaboration: OCTF Initiatives (Child Abuse Prevention)  
 Communication: Community Initiatives and Collaborations

## Shared Priorities

## Shared Outcomes

## Shared Indicators

## Shared Strategies

**Communication**

Community organizations are knowledgeable of community initiatives, projects and programs so that the needs of children and families in are met in a coordinated, simplified, and cost effective manner.

Community organizations are informed of the initiatives, projects, programs and services in Delaware County.

- Share information about initiatives, projects, programs and services in the county.
- Inform community of gaps in services and resources.
- Research and utilize social networking tools to share information.

**Collaboration**

Community organizations are involved in collaborations so that the needs of children and their families are met in a coordinated, simplified, and cost effective manner.

Community organizations are involved in collaborations with other agencies to meet the needs of children and families in Delaware County.

- Identify opportunities for collaboration between organizations.
- Identify organizations involved in collaborative community initiatives, projects, programs and services.

**Service Coordination**

Delaware County Service Coordination Plan is implemented so that the needs of multi-need children and their families are met in a coordinated, simplified, and cost effective manner.

All agencies and organizations have knowledge of the Delaware County Service Coordination Plan

- Annually review Delaware County Service Coordination Plan with Council agencies
- Annually meet with Help Me Grow and Youth Cluster agency administrators to review Delaware County Service Coordination Plan.

# Projects and Initiatives

## OHIO CHILDREN'S TRUST FUND

"To prevent child abuse and neglect through investing in strong communities, healthy families and safe children."

Provides families in Delaware County with:

### ❖ Family Support Groups (DCGHD)

Family Support Specialist offers individual contact and support. Programs link families through:

- ✓ **Personal Family Assistance-** Family Support Specialist answers family questions and concerns regarding their child with special needs on an ongoing basis.
- ✓ **Down Syndrome Playgroup** – This group meets the 1<sup>st</sup> Wednesday of every month.
- ✓ **Autism Support Group** – This group usually meets the 3<sup>rd</sup> Wednesday of every month.
- ✓ **Parent Pages Newsletter** - This newsletter goes out to all families in Early Intervention/Help Me Grow every other month.
- ✓ **Transition Workshop** – This workshop is held three times throughout the year (spring, fall and winter) for all families in HMG/EI.

7/1/10 to 6/30/11	Parents	Children	Contacts with Professionals and Community Agencies	Parent Pages Newsletters Distributed
<b>TOTAL NUMBER OF CONTACTS:</b>	1024	79	2058	2400
<b>Professionals and Community Agencies:</b> DCBDD, Early Intervention, Help Me Grow, Down Syndrome Association of Central Ohio, Delaware County Library, Family & Children First Council, Bureau for Children with Medical Handicaps, Autism Society of Central Ohio, Cerebral Palsy Parent, DGHD, Delaware Speech and Hearing, Family Information Network, Ohio Coalition for the Education of Children with Disabilities, Ohio Legal Rights Service, Miracle League of Central Ohio, The ARC of Ohio, Hispanic Support Group – PLANEO, Ohio Department of Developmental Disabilities Family Advisory Council, Ohio Center for Autism and Low Incidence Disabilities, ESC of Central Ohio				

### ❖ Westerville Estates Project (Community Library, Sunbury)

Community Library in Sunbury provides afterschool/summer programs for children and works in collaboration with other community agencies to increase community resources for economically disadvantaged families living in the Fancher Road-Westerville Estates Trailer Park.

7/1/10 to 6/30/11	CHILDREN	FAMILIES
<b>TOTAL PARTICIPANTS:</b> September, 2010 through May, 2011	37students  1204 students/118 days Average Daily Attendance: 18 students	32
<b>Community Agency Partners:</b> Big Walnut School District, Hylan Souders Elementary School, Big Walnut Friends Who Share, Three Sisters, Community Action Organization, Big Walnut Rotary, Big Walnut Lions Club, Big Walnut Ministerial Association, Delaware County Job and Family Services, Sunbury Community Library, Helpline of Delaware County, Delaware County Sheriff Department		

## HELP ME GROW

*"To assure that newborns, infants and toddlers across Ohio have the best possible start in life."*

Help Me Grow is a community based program that promotes trans-disciplinary, family centered services for expectant parents, newborns, infants, toddlers and their families. Help Me Grow identifies children with or at risk for developmental delays or disabilities and links them to services tailoring to each family and child's unique needs.

*Provides families in Delaware County with:*

- ❖ *Central Intake and Referral (DGHD)*
- ❖ *Newborn Home Visits & Prenatal Visits (DGHD)*
- ❖ *Educational Ongoing Home Visiting (DGHD)*
- ❖ *Developmental Evaluation (DGHD & DCBDD)*
- ❖ *Service Coordination & IFSP development, implementation, & review (FCFC, DGHD & DCBDD)*

	<b>CURRENT CASELOAD</b>	<b>ODH TARGET #</b>	<b>Total # of Visits for SFY 11</b>
<b>Part C Children</b>	<b>397</b>	<b>215</b>	
<b>At Risk /Home Visiting Children</b>	<b>32</b>	<b>20</b>	
<b>Total Caseload</b>	<b>429</b>	<b>235</b>	<b>1,745</b>

<b>(7/1/10 to 6/31/11) HELP ME GROW OUTGOING REFERRALS to COMMUNITY AGENCIES</b>	<b>Total Referrals for SFY 11 1,198</b>
<i>Action For Children, Central Ohio Mental Health, Children's Services, Community Action Organization, DCBDD, DCJFS, Head Star, Helpline, DCGHD (BCMH, Car Seats, Immunizations, Birth Certificates, WIC, Flu Clinics), District Library, Mothers Support Groups, Ohio Home Care Waiver, People In Need, Salvation Army, SSI, Big Walnut School District, Buckeye Valley School District, Delaware City Schools, Dublin School District, Olentangy School District, Westerville City Schools, Other (Private Preschools, Top Soccer, Miller's Farm, Subsidized Housing Woodward Summer Food Program, Infant See Program, Pediatric dentists, Strand Summer Movies, Legal Counsel, Hospitals, Free Clinics, Physicians.)</i>	

## HEAD START EXPANSION PROJECT

### **(DGHD and LEADS Head Start)**

This program serves 0-3 at risk children/families, who would not meet the new eligibility requirements for Help Me Grow Program. Child and family are provided with information and access to community resources and program.

			<b>Total # of Visits for SFY 11</b>
<b>CURRENT CASELOAD (CHILDREN SERVED)</b>	<b>12</b>		<b>502</b>
<b>REFERRALS TO HMG</b>	<b>4</b>		
<b>SOCIALIZATION EVENTS</b>	<b>24</b>		

## INTER-AGENCY YOUTH CLUSTER

"Family and Children First Council provides integration and planning so that Delaware County agencies can meet the needs of children involved with multiple agency systems and their families in a coordinated, simplified, and cost effective manner."

	<b>Youth involved in multiple agency systems</b>
<b>ADMINISTRATIVE LEVEL</b> <i>Active Cluster</i>	<b>13</b>
<b>FACT TEAM LEVEL</b> <i>Red Flagged</i>	<b>10</b>
<b>FACT TEAM LEVEL</b> <i>Pay Attention</i>	<b>40</b>
<i>Aged out/ change of status</i>	<b>15</b>

### System of Care

*System of Care is a funding option for all the involved systems to access when the resources of one system are not adequate to address the needs of the youth and family, regardless of which system they first entered. System of Care maximizes the availability of resources for children and families with extraordinary needs that may not be served adequately with local base services.*

**Amount of Funding: \$26,871.17**

#### Ages of Children Served

0-2 years	3-9 years	10-17 years	18-21 years
<b>0</b>	<b>2</b>	<b>31</b>	<b>1</b>

Needs of Children (at time of Intake)	Number of Children	Types of Services Provided	Number of Children
<i>Developmental Disabilities</i>	<b>13</b>	<i>Non-Clinical in home visits</i>	<b>1</b>
<i>Child Abuse</i>	<b>4</b>	<i>Non-Clinical Support Groups</i>	<b>22</b>
<i>Child Neglect</i>	<b>5</b>	<i>Parent Education</i>	<b>23</b>
<i>Mental Health</i>	<b>27</b>	<i>Mentoring</i>	<b>22</b>
<i>Alcohol/Drugs</i>	<b>11</b>	<i>Respite Care (including Summer Camp)</i>	<b>10</b>
<i>Unruly</i>	<b>14</b>	<i>Social Skill Groups</i>	<b>7</b>
<i>Delinquent</i>	<b>17</b>	<i>Structured Activities to improve family functioning</i>	<b>22</b>
<i>Physical Health</i>		<i>Parent Advocacy</i>	
<i>Special Education</i>	<b>15</b>	<i>Service Coordination</i>	
<i>Poverty</i>	<b>8</b>	<i>Safety and Adaptive Equipment</i>	
		<i>Transportation</i>	

*Administrator of the system include staff from Job and Family Services, Delaware County Board of Developmental Disabilities, Delaware County Juvenile Court, Delaware -Morrow County Mental Health and Recovery Services Board, and other agency representatives as determined by parent or case. These may include but not limited to: Educational Service Center of Central Ohio, Delaware City Schools, Olentangy Local Schools, Buckeye Valley Schools, Big Walnut Schools, other foster care agencies, Head Start, Delaware General Health District (Help Me Grow), healthcare providers, counselors, etc.*

# Community & School Collaborations

## ***PARENT PROJECT (Delaware County Juvenile Court)***

The Parent Project is a 13 week parent training program designed specifically for parents of strong-willed or out-of-control adolescent children. The program teaches concrete identification, prevention, and intervention strategies for the *most* destructive of adolescent behaviors (poor school attendance and performance, alcohol and other drug use, gangs, runaways, and violent teens).

*Program Contact:*

Katie Murray, Treatment Coordinator  
Delaware County Juvenile Court, 140 N. Sandusky St., Delaware, OH 43015  
740- 833-2671  
E-mail: [KMurray@co.delaware.oh.us](mailto:KMurray@co.delaware.oh.us)

## ***M.O.M.S. PROGRAM (Mothers Offering Mentoring Support) (Delaware County Juvenile Court)***

The Mothers Offering Mentoring Support (M.O.M.S.) program provides young women in Delaware County with adult and peer role models to increase positive life skill development and the likelihood of family self-sufficiency.

*Program Contact:*

Patty Cram, Program Coordinator  
Delaware County Juvenile Court, 140 N. Sandusky St., Delaware, OH 43015  
740-833-2678  
E-mail: [PCram@co.delaware.oh.us](mailto:PCram@co.delaware.oh.us)

## ***FAMILY RESOURCE CENTER (Action for Children)***

### ***SUMMER LUNCH PROGRAM (Andrew's House)***

#### ***at Woodward Elementary***

The Woodward Family Resource Center provides access to and encourages use of a comprehensive menu of family support programs, services and activities to families in the Woodward school community. The summer lunch program provides free lunch June through August to any child living in the Woodward school community.

*Program Contact:*

Robin Moore, Project Coordinator  
Family Resource Center at Woodward, 200 S. Washington, Delaware, OH 43015  
740-833-1619  
E-mail: [robinmoore@actionforchildren.org](mailto:robinmoore@actionforchildren.org)

## ***P.E.A.C.E. COLLABORATIVE***

The PEACE Collaborative is committed to promoting comprehensive prevention education and positive youth development in all Delaware County schools through community collaboration such that children achieve academic success in a supportive, healthy school environment.

*Program Contact:*

Delaware County PEACE Collaborative  
HelpLine of Delaware and Morrow Counties, Inc. , 11 N Franklin Street, Delaware, Ohio 43015  
Phone: 1-740-368-1740 ext. 117  
Email: [delcopeacecollab@gmail.com](mailto:delcopeacecollab@gmail.com)

## ***DRUG FREE DELAWARE COALITION***

The Drug Free Delaware Coalition is committed to implementing multiple community strategies that will comprehensively address the problem of underage drinking and drug use by strengthening community norms against underage use and strengthening practice and enforcement of those policies and laws that limit access.

*Program Contact:*

Drug Free Delaware Coalition  
Recovery and Prevention Resources, 118 Stover Drive, Delaware, Ohio 43015  
740-369-6811

## ***RE-ENTRY COALITION TASK FORCE***

The Re-entry Coalition Task Force is coordinating a five-year strategic plan with a goal to attempt to reduce recidivism by 50% based on a community re-entry needs assessment. The Delaware County Re-Entry Task Force assists offenders in making a successful transition from incarceration to leading stable, law-abiding, and productive lives in our community.

*Program Contact:*

Patricia Clements, Reentry Coordinator

Delaware County Job and Family Services, 140 N. Sandusky Street, 2nd Floor, Delaware, Ohio 43015  
740-833-2324

E-mail: [PClements@co.delaware.oh.us](mailto:PClements@co.delaware.oh.us)

## ***DELAWARE COUNTY SUICIDE COALITION***

Delaware County Suicide Coalition intends to raise awareness for suicide prevention. The goals of the Coalition are to tabulate accurate suicide statistics for our county and to deliver presentations to middle and high schools as well as adult programs, including ASIST (Applied Suicide Intervention Skills Training)

*Program Contact:*

Jason Colvin, Suicide Prevention Coordinator

HelpLine of Delaware and Morrow Counties, Inc. , 11 N Franklin Street, Delaware, Ohio 43015  
740-363-1835

E-mail: [jcolvin@helplinedelmor.org](mailto:jcolvin@helplinedelmor.org)

## ***DELAWARE GENERAL HEALTH DISTRICT COMMUNITY PLAN***

Delaware General Health District Community Plan intends to provide linkage and access to services in Delaware County. The goals of the plan are:

- to increase awareness and accessibility to human and social services for Delaware County residents.
- to provide all individuals with an access to integrated, broad-based, high-quality community services.
- to provide access to appropriate, reliable, and affordable transportation
- to provide all individuals an access to a pathway to self-sufficiency

*Contact:*

Lux Phatak

Delaware General Health District, 3 W. Winter St., P. O. Box 570, Delaware, OH 43015  
(740) 203-2081

E-mail: [lphatak@delawarehealth.org](mailto:lphatak@delawarehealth.org)

## ***MENTAL HEALTH RECOVERY BOARD COMMUNITY PLAN***

The Mental Health Recovery Services Board plans, funds, coordinates and monitors public behavioral health services delivered to the residents of Delaware and Morrow Counties through a network of community providers. The Mental Health Recovery Board intends to promote recovery and overall well-being for individuals and the community. The goals of the community plan are:

- Take necessary financial and operational steps to maintain core mental health and addiction services through 2015
- Continue to develop a local behavioral health system of care based on continuous quality improvement
- Continue developing youth-focused prevention in community partnership while orienting the system of care toward earlier intervention
- Actively seek opportunities to improve services, access to care, financial stability and to inform the community that behavioral health care is health care

*Contact:*

Steve Hedge, Executive Director

Delaware-Morrow Mental Health & Recovery Services Board  
40 North Sandusky St., Suite 301, Delaware, Ohio 43015  
(740) 368-1740

E-mail: [shedge@ohiopps.org](mailto:shedge@ohiopps.org)

# **FAMILY AND CIVIC ENGAGEMENT PLANS**

## **DELAWARE CITY SCHOOLS**

**PRIORITY:** *School Success*

**OUTCOME:**

*Increase Student's Academic Success  
Positive School Climate  
Reduction of Non- Academic Barriers  
Reduction of Student's Risky Behaviors*

*District Contact:*

Virginia Cardwell  
Delaware City Schools  
248 N. Washington Street  
Delaware, OH 43015  
740.833.1128; 740.833.1149  
[cardweje@dcs.k12.oh.us](mailto:cardweje@dcs.k12.oh.us)

## **OLENTANGY SCHOOLS**

**PRIORITY:** *School Success*

*Parental Involvement*

*Positive School Climate*

**OUTCOME:**

*Increase Student's Academic Success  
Reduction of Student's Risky Behavior*

*District Contact:*

Michele Armstrong  
Olentangy Local School District  
814 Shanahan Road  
Lewis Center, OH  
740-816-2261  
E-mail: [Michele\\_armstrong@olentangy.k12.oh.us](mailto:Michele_armstrong@olentangy.k12.oh.us)

## **BUCKEYE VALLEY LOCAL SCHOOLS**

**PRIORITY:** *School Success*

**OUTCOME:**

*Increase Graduation Rate  
Increase Student Achievement*

*District Contact:*

Barbara Coolahan, Director of Student Services  
Buckeye Valley Local Schools  
683 Coover Road  
Delaware, Ohio 43015  
740-363-6626  
E-mail [bcoolahan@buckeyevalley.k12.oh.us](mailto:bcoolahan@buckeyevalley.k12.oh.us)

## **BIG WALNUT SCHOOLS**

**PRIORITY:** *School Success*

**OUTCOME:**

*Increase Communication  
Increase opportunities for Community Involvement*

*District Contact:*

Karen Hall, Director of Student Services  
Big Walnut Local Schools  
70 N Walnut St  
Galena, OH 43021  
740-965-3010  
[karenhall@bigwalnut.k12.oh.us](mailto:karenhall@bigwalnut.k12.oh.us)

## **Section 3**

# **Delaware County Demographics**

*Ohio Department of Development*

*Office of Policy, Research and Strategic Planning*

# Ohio County Profiles

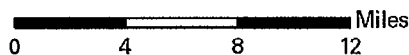
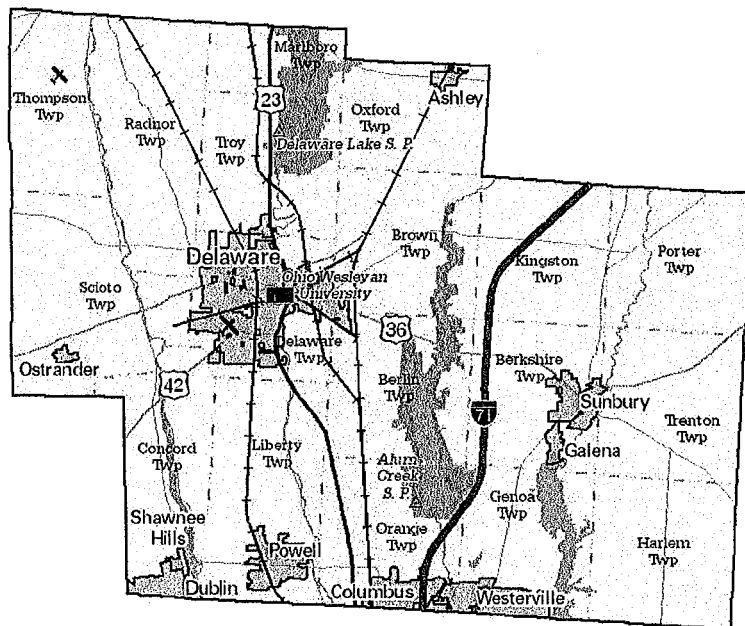
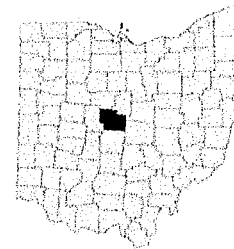
Ohio

Department of  
Development

Prepared by the Office of Policy, Research and Strategic Planning

## Delaware County

**Established:** Act - February 10, 1808  
**2010 Population:** 174,214  
**Land Area:** 442.5 square miles  
**County Seat:** Delaware City  
**Named for:** Delaware Native American Tribe



### Taxes

Taxable value of real property	\$6,110,657,390
Residential	\$5,309,092,790
Agriculture	\$94,005,260
Industrial	\$127,996,240
Commercial	\$579,497,090
Mineral	\$66,010
Ohio income tax liability	\$248,257,460
Average per return	\$3,249.87

### Land Use/Land Cover

	Percent
Urban (Residential/Commercial/Industrial/Transportation and Urban Grasses)	16.66%
Cropland	52.55%
Pasture	2.64%
Forest	25.80%
Open Water	2.06%
Wetlands (Wooded/Herbaceous)	0.01%
Bare/Mines	0.30%

### Largest Places

	Census 2010	Census 2000
Delaware city	34,753	25,243
Powell city	11,500	6,247
Westerville city (pt.)	7,792	5,900
Columbus city (pt.)	7,245	1,891
Sunbury village	4,389	2,630
Dublin city (pt.)	4,018	4,283
Ashley village	1,330	1,216
Shawnee Hills village	681	419
Galena village	653	305
Ostrander village	643	405

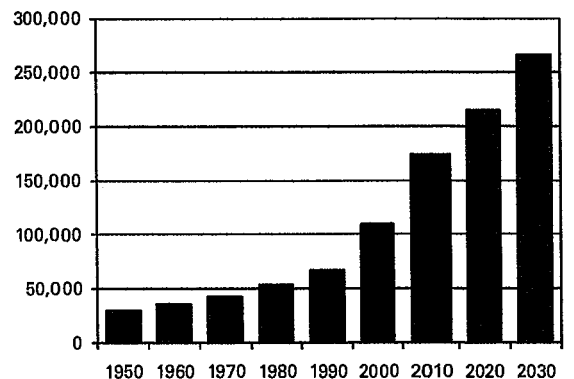
### Total Population

#### Census

1800		1880	27,381	1950	30,278
1810	2,000	1890	27,189	1960	36,107
1820	7,639	1900	26,401	1970	42,908
1830	11,504	1910	27,182	1980	53,840
1840	22,060	1920	26,013	1990	66,929
1850	21,817	1930	26,016	2000	109,989
1860	23,902	1940	26,780	2010	174,214
1870	25,175				

#### Projected

2020	215,480
2030	286,200



Population by Race	Number	Percent
ACS Total Population	159,868	100.0%
White	143,857	90.0%
African-American	6,066	3.8%
Native American	164	0.1%
Asian	5,614	3.5%
Pacific Islander	10	0.0%
Other	1,111	0.7%
Two or More Races	3,046	1.9%
Hispanic (may be of any race)	2,921	1.8%
<b>Total Minority</b>	<b>17,841</b>	<b>11.2%</b>

Educational Attainment	Number	Percent
Persons 25 years and over	103,600	100.0%
No high school diploma	5,210	5.0%
High school graduate	23,508	22.7%
Some college, no degree	18,477	17.8%
Associate degree	7,894	7.6%
Bachelor's degree	31,736	30.6%
Master's degree or higher	16,775	16.2%

## Family Type by

Employment Status	Number	Percent
Total Families	45,353	100.0%
Married couple, husband and wife in labor force	24,773	54.6%
Married couple, husband in labor force, wife not	8,651	19.1%
Married couple, wife in labor force, husband not	1,975	4.4%
Married couple, husband and wife not in labor force	3,851	8.5%
Male householder, in labor force	2,076	4.6%
Male householder, not in labor force	285	0.6%
Female householder, in labor force	3,231	7.1%
Female householder, not in labor force	511	1.1%

Household Income	Number	Percent
Total Households	58,220	100.0%
Less than \$10,000	1,859	3.2%
\$10,000 to \$19,999	2,738	4.7%
\$20,000 to \$29,999	3,296	5.7%
\$30,000 to \$39,999	3,499	6.0%
\$40,000 to \$49,999	4,337	7.4%
\$50,000 to \$59,999	4,005	6.9%
\$60,000 to \$74,999	5,437	9.3%
\$75,000 to \$99,999	9,502	16.3%
\$100,000 to \$149,999	12,457	21.4%
\$150,000 to \$199,999	5,617	9.6%
\$200,000 or more	5,473	9.4%
<b>Median household income</b>	<b>\$85,054</b>	

Percentages may not sum to 100% due to rounding.

Population by Age	Number	Percent
ACS Total Population	159,868	100.0%
Under 5 years	12,658	7.9%
5 to 17 years	32,176	20.1%
18 to 24 years	11,434	7.2%
25 to 44 years	49,909	31.2%
45 to 64 years	40,213	25.2%
65 years and more	13,478	8.4%
<b>Median Age</b>	<b>36.2</b>	

## Family Type by Presence of Own Children Under 18

	Number	Percent
Total Families	45,353	100.0%
Married-couple families with own children	20,590	45.4%
Male householder, no wife present, with own children	1,642	3.6%
Female householder, no husband present, with own children	2,636	5.8%
Families with no own children	20,485	45.2%

## Poverty Status of Families By Family Type by Presence Of Related Children

	Number	Percent
Total Families	45,353	100.0%
Family income above poverty level	43,977	97.0%
Family income below poverty level	1,376	3.0%
Married couple, with related children	272	19.8%
Male householder, no wife present, with related children	208	15.1%
Female householder, no husband present, with related children	586	42.6%
Families with no related children	310	22.5%

## Ratio of Income

To Poverty Level	Number	Percent
Population for whom poverty status is determined	157,007	100.0%
Below 50% of poverty level	3,123	2.0%
50% to 99% of poverty level	3,874	2.5%
100% to 149% of poverty level	5,736	3.7%
150% to 199% of poverty level	7,019	4.5%
200% of poverty level or more	137,255	87.4%

## Geographical Mobility

	Number	Percent
Population aged 1 year and older	157,773	100.0%
Same house as previous year	136,147	86.3%
Different house, same county	8,126	5.2%
Different county, same state	9,355	5.9%
Different state	3,538	2.2%
Abroad	607	0.4%

## Travel Time To Work

	Number	Percent
Workers 16 years and over	76,635	100.0%
Less than 15 minutes	17,217	22.5%
15 to 29 minutes	29,192	38.1%
30 to 44 minutes	21,381	27.9%
45 to 59 minutes	6,153	8.0%
60 minutes or more	2,692	3.5%
<b>Mean travel time</b>	<b>25.5 minutes</b>	

## Housing Units

	Number	Percent
Total housing units	61,419	100.0%
Occupied housing units	58,220	94.8%
Owner occupied	48,575	83.4%
Renter occupied	9,645	16.6%
Vacant housing units	3,199	5.2%

## Year Structure Built

	Number	Percent
Total housing units	61,419	100.0%
Built 2005 or later	4,026	6.6%
Built 2000 to 2004	15,290	24.9%
Built 1990 to 1999	16,731	27.2%
Built 1980 to 1989	6,703	10.9%
Built 1970 to 1979	5,800	9.4%
Built 1960 to 1969	3,038	4.9%
Built 1950 to 1959	2,176	3.5%
Built 1940 to 1949	824	1.3%
Built 1939 or earlier	6,831	11.1%
<b>Median year built</b>	<b>1993</b>	

## Value for Specified Owner-Occupied Housing Units

	Number	Percent
Specified owner-occupied housing units	48,575	100.0%
Less than \$20,000	729	1.5%
\$20,000 to \$39,999	357	0.7%
\$40,000 to \$59,999	296	0.6%
\$60,000 to \$79,999	636	1.3%
\$80,000 to \$99,999	961	2.0%
\$100,000 to \$124,999	1,858	3.8%
\$125,000 to \$149,999	2,929	6.0%
\$150,000 to \$199,999	8,031	16.5%
\$200,000 to \$299,999	15,151	31.2%
\$300,000 to \$499,999	12,924	26.6%
\$500,000 to \$999,999	4,066	8.4%
\$1,000,000 or more	637	1.3%
<b>Median value</b>	<b>\$248,600</b>	

## House Heating Fuel

	Number	Percent
Occupied housing units	58,220	100.0%
Utility gas	38,692	66.5%
Bottled, tank or LP gas	5,563	9.6%
Electricity	9,862	16.9%
Fuel oil, kerosene, etc	2,788	4.8%
Coal, coke or wood	854	1.5%
Solar energy or other fuel	418	0.7%
No fuel used	43	0.1%

Percentages may not sum to 100% due to rounding.

## Gross Rent

	Number	Percent
Specified renter-occupied housing units	9,645	100.0%
Less than \$100	97	1.0%
\$100 to \$199	361	3.7%
\$200 to \$299	114	1.2%
\$300 to \$399	270	2.8%
\$400 to \$499	367	3.8%
\$500 to \$599	760	7.9%
\$600 to \$699	1,438	14.9%
\$700 to \$799	1,709	17.7%
\$800 to \$899	970	10.1%
\$900 to \$999	788	8.2%
\$1,000 to \$1,499	1,662	17.2%
\$1,500 or more	583	6.0%
No cash rent	526	5.5%
<b>Median gross rent</b>	<b>\$764</b>	

Median gross rent as a percentage of household income 26.5

## Selected Monthly Owner Costs for Specified Owner-Occupied Housing Units

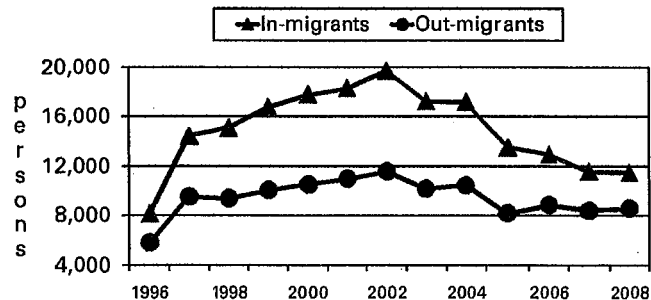
	Number	Percent
Specified owner-occupied housing units with a mortgage	40,328	100.0%
Less than \$400	183	0.5%
\$400 to \$599	385	1.0%
\$600 to \$799	921	2.3%
\$800 to \$999	1,933	4.8%
\$1,000 to \$1,249	3,593	8.9%
\$1,250 to \$1,499	4,953	12.3%
\$1,500 to \$1,999	10,473	26.0%
\$2,000 to \$2,999	12,645	31.4%
\$3,000 or more	5,242	13.0%
<b>Median monthly owners cost</b>	<b>\$1,891</b>	

Median monthly owners cost as a percentage of household income 23.2

## Vital Statistics

	Number	Rate
Births / rate per 1,000 women aged 15 to 44	2,331	62.3
Teen births / rate per 1,000 females 15-19	70	13.3
Deaths / rate per 100,000 population	798	496.1
Marriages / rate per 1,000 population	698	4.5
Divorces / rate per 1,000 population	477	3.0

## Migration



## Agriculture

Land in farms (acres)	132,000
Number of farms	720
Average size (acres)	183
Total cash receipts	\$81,466,000
Per farm	\$113,147

## Education

Public schools	40
Students (Average Daily Membership)	25,583
Expenditures per student	\$9,652
Student-teacher ratio	18.7
Graduation rate	95.0
Teachers (Full Time Equivalent)	1,512.5
Non-public schools	11
Students	2,180
4-year public universities	0
Branches	0
2-year public colleges	0
Private universities and colleges	1
Public libraries (Main / Branches)	3 / 2

## Transportation

Registered motor vehicles	175,410
Passenger cars	130,147
Noncommercial trucks	17,795
Total license revenue	\$4,041,962.47
Interstate highway miles	17.23
Turnpike miles	0.00
U.S. highway miles	68.03
State highway miles	125.82
County, township, and municipal road miles	1,192.04
Commercial airports	2

## Voting

Number of precincts	137
Number of registered voters	119,690
Voted in 2010 election	69,509
Percent turnout	58.1%

## Health Care

Physicians (MDs & DOs)	684
Registered hospitals	1
Number of beds	152
Licensed nursing homes	6
Number of beds	439
Licensed residential care	7
Number of beds	527
Adults with employer-based insurance	71.8%
Children with employer-based insurance	75.9%

## State Parks, Forests, Nature Preserves, And Wildlife Areas

Areas/Facilities	4
Acreage	166.41

## Communications

Television stations	0
Radio stations	1
Daily newspapers	1
Circulation	8,048

## Crime

Total crimes reported in Uniform Crime Report	2,455
---	-------

## Finance

FDIC insured financial institutions (HQs)	3
Assets (000)	\$1,568,834,299
Branch offices	64
Institutions represented	13

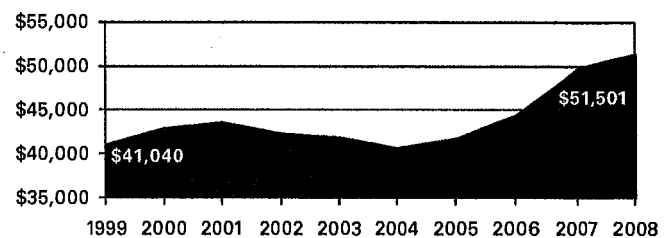
## Transfer Payments

Total transfer payments	\$604,562,000
Payments to individuals	\$576,680,000
Retirement and disability	\$299,140,000
Medical payments	\$189,736,000
Income maintenance (Supplemental SSI, family assistance, food stamps, etc)	\$34,656,000
Unemployment benefits	\$11,940,000
Veterans benefits	\$8,921,000
Federal education and training assistance	\$25,587,000
Other payments to individuals	\$6,700,000
Total personal income	\$8,493,140,000
Dependency ratio	7.1%

## Federal Expenditures

Direct expenditures or obligations	\$438,738,840
Retirement and disability	\$239,191,477
Other direct payments	\$81,507,561
Grant awards	\$84,677,674
Highway planning and construction	\$2,715,531
Temporary assistance to needy families	\$7,052,544
Medical assistance program	\$20,015,157
Procurement contract awards	\$12,100,655
Dept. of Defense	\$4,370,787
Salary and wages	\$21,261,473
Dept. of Defense	\$318,000
Other federal assistance	\$267,537,790
Direct loans	\$12,000
Guaranteed loans	\$162,807,601
Insurance	\$104,718,189

## Per Capita Personal Income



## Civilian Labor Force

	2005	2006	2007	2008	2009
Civilian labor force	83,300	87,700	90,200	92,300	92,400
Employed	79,800	84,400	86,600	88,000	86,000
Unemployed	3,500	3,400	3,600	4,300	6,400
Unemployment rate	4.3	3.8	4.0	4.6	6.9

## Establishments, Employment, and Wages by Sector: 2008

Industrial Sector	Number of Establishments	Average Employment	Total Wages	Average Weekly Wage
<b>Private Sector</b>	<b>3,991</b>	<b>61,667</b>	<b>\$2,844,132,923</b>	<b>\$887</b>
Goods-Producing	633	9,055	\$457,411,120	\$971
Natural Resources and Mining	22	299	\$10,535,770	\$678
Construction	446	2,644	\$122,934,429	\$894
Manufacturing	166	6,113	\$323,940,921	\$1,019
Service-Providing	3,357	52,612	\$2,386,721,803	\$872
Trade, Transportation and Utilities	922	15,008	\$518,792,771	\$665
Information	65	896	\$54,140,076	\$1,162
Financial Services	439	5,101	\$341,488,164	\$1,287
Professional and Business Services	842	13,938	\$1,045,897,241	\$1,443
Education and Health Services	352	6,069	\$228,188,348	\$723
Leisure and Hospitality	400	9,765	\$150,697,907	\$297
Other Services	327	1,824	\$47,102,744	\$497
<b>Federal Government</b>		<b>257</b>	<b>\$13,048,327</b>	<b>\$976</b>
<b>State Government</b>		<b>911</b>	<b>\$44,832,312</b>	<b>\$947</b>
<b>Local Government</b>		<b>6,817</b>	<b>\$279,304,517</b>	<b>\$788</b>

Private Sector total includes Unclassified establishments not shown.

## Change Since 2003

<b>Private Sector</b>	<b>43.4%</b>	<b>41.7%</b>	<b>71.7%</b>	<b>21.2%</b>
Goods-Producing	17.7%	12.8%	34.1%	18.8%
Natural Resources and Mining	10.0%	53.3%	60.8%	5.1%
Construction	18.9%	-6.1%	10.5%	17.6%
Manufacturing	16.1%	21.8%	45.0%	19.0%
Service-Producing	49.5%	48.2%	81.5%	22.3%
Trade, Transportation and Utilities	41.4%	34.2%	56.7%	16.9%
Information	44.4%	215.5%	272.0%	17.8%
Financial Services	58.5%	-4.6%	-4.4%	0.2%
Professional and Business Services	58.3%	121.0%	187.9%	30.2%
Education and Health Services	70.0%	56.5%	94.6%	24.2%
Leisure and Hospitality	42.3%	38.2%	48.0%	7.2%
Other Services	35.7%	30.5%	59.2%	22.1%
<b>Federal Government</b>		<b>7.1%</b>	<b>26.8%</b>	<b>18.3%</b>
<b>State Government</b>		<b>2.7%</b>	<b>8.0%</b>	<b>5.2%</b>
<b>Local Government</b>		<b>50.2%</b>	<b>80.1%</b>	<b>19.9%</b>

## Business Numbers

	2004	2005	2006	2007	2008
Business starts	470	467	556	374	397
Active businesses	2,614	3,123	3,286	3,182	3,142

## Major Employers

Delaware City Schools	Govt
JP Morgan Chase & Co	Fin
Kroger Co	Trade
McGraw Hill Companies	Mfg
Ohio Wesleyan University	Serv
OhioHealth/Grady Memorial Hospital	Serv
Olentangy Local Schools	Govt
PPG Industries Inc	Mfg
Showa Corp/American Showa Inc	Mfg
State of Ohio	Govt

## Residential Construction

	2005	2006	2007	2008	2009
Total units	1,957	1,247	1,034	744	533
Total valuation (000)	\$513,658	\$300,734	\$349,008	\$183,177	\$145,679
Total single-unit bldgs	1,851	1,165	979	566	491
Average cost per unit	\$271,081	\$249,320	\$350,008	\$301,889	\$291,430
Total multi-unit bldg units	106	82	55	178	42
Average cost per unit	\$112,153	\$125,327	\$115,455	\$69,146	\$61,589